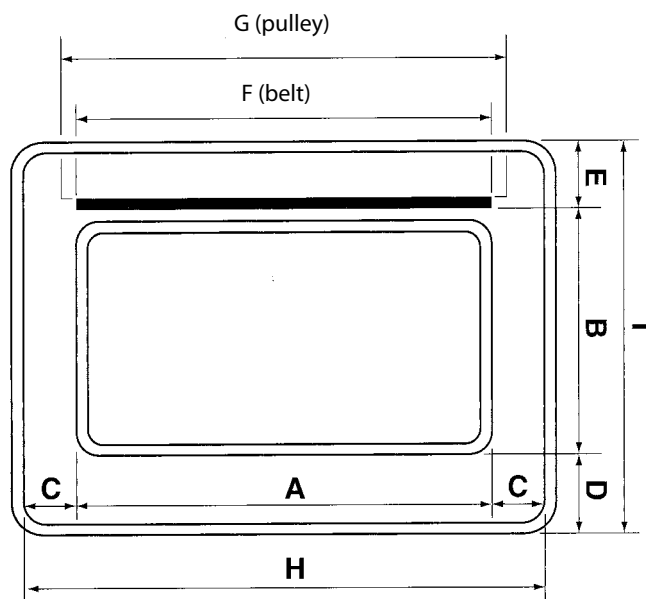


Basic size Starco

The following tables show the basic sizes of elevators with Starco resp. Super Starco elevator buckets. These sizes are minimum parameters.



Elevator shaft sizes for Starco elevator buckets

| no. | B | A | C | D | E | F | G | H | I |
|-----|-----|-----|----|----|----|-----|-----|-----|-----|
| 10 | 88 | 106 | 30 | 35 | 40 | 120 | 140 | 166 | 163 |
| 13 | 114 | 138 | 30 | 40 | 45 | 150 | 170 | 200 | 200 |
| 18 | 140 | 185 | 40 | 40 | 45 | 200 | 220 | 265 | 225 |
| 23 | 165 | 240 | 40 | 50 | 55 | 250 | 270 | 320 | 270 |
| 28 | 165 | 290 | 40 | 50 | 55 | 300 | 320 | 370 | 270 |
| 30 | 180 | 308 | 40 | 50 | 55 | 320 | 340 | 388 | 285 |
| 33 | 214 | 346 | 70 | 70 | 70 | 350 | 420 | 486 | 354 |
| 37 | 214 | 386 | 70 | 70 | 70 | 400 | 470 | 526 | 354 |
| 45 | 214 | 463 | 70 | 70 | 70 | 500 | 570 | 603 | 354 |

Basic size Starco

The elevator head and foot sizes may be calculated using the following equations. The next page shows the corresponding elevator drawing.

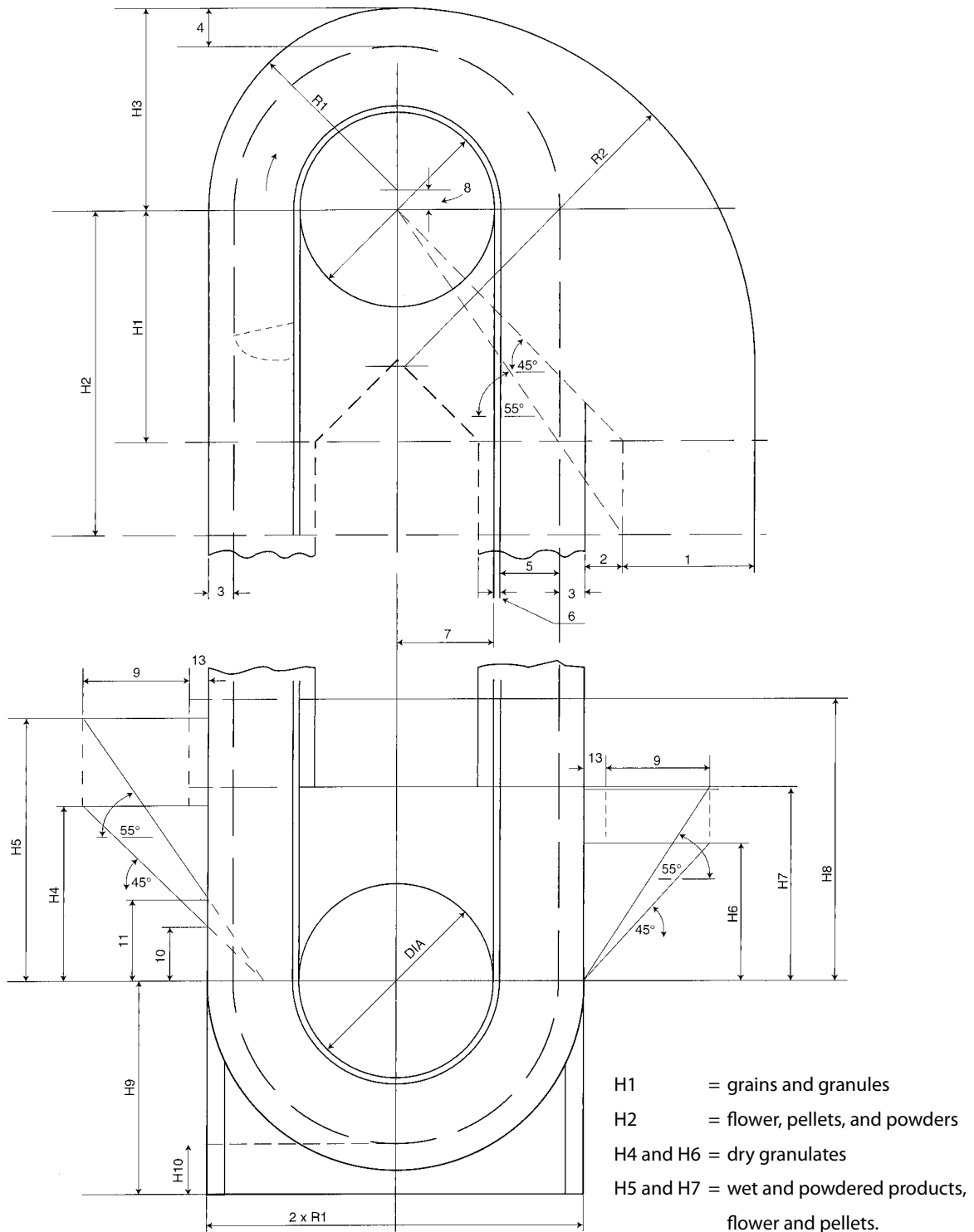
| Basic sizes for the elevator head and foot with Starco resp. Super Starco elevator buckets | |
|--|---|
| Elevator head sizes | |
| 7 | = $\frac{\text{Pulley diameter}}{2}$ |
| R1 | = 3 + 5 + 6 + 7 |
| R2 | = R1 + 1 + 2 |
| H1 | = R1 + 2 |
| H2 | = 1,43 x (R1 + 2) |
| 8 | = 7 + 6 + 5 + 4 - R1 |
| H3 | = 8 + R1 |
| Elevator foot sizes | |
| H4 | = 9 + 13 + 10 |
| H5 | = 1,43 x (9 + 13) + 11 |
| H6 | = 9 + 13 |
| H7 | = 1,43 x (9 + 13) |
| H8 | = 1) 50 mm + H4 or H5 2) 7 + 2/3 of the pulley diameter + 25mm (The highest number of 1 or 2 is to be used) |
| H9 | = 50 mm + 7 + 6 + 5 + 1/3 of the pulley diameter to be added |
| H10 | = 50 mm + 1/3 pulley diameter under |

| Sizes of the elevator head and foot for steel elevator buckets (parameters in mm) | | | | | | | | | | | | |
|---|-----|-----|----|-----|-----|----|-----|-----|-----|-----|----|--|
| Steel | 1 | 2 | 3 | 4 | 5 | 6 | 9 | 10 | 11 | 12 | 13 | |
| 100-90 | 250 | 100 | 40 | 100 | 89 | 8 | 200 | 85 | 110 | 186 | 50 | |
| 130-120 | 250 | 100 | 40 | 100 | 120 | 8 | 200 | 100 | 125 | 220 | 50 | |
| 140-120 | 300 | 100 | 40 | 100 | 120 | 8 | 250 | 100 | 125 | 230 | 50 | |
| 160-140 | 350 | 100 | 45 | 100 | 147 | 8 | 300 | 115 | 140 | 250 | 50 | |
| 180-140 | 400 | 100 | 45 | 100 | 147 | 8 | 350 | 115 | 140 | 267 | 50 | |
| 200-150 | 400 | 100 | 50 | 125 | 150 | 8 | 350 | 125 | 150 | 300 | 50 | |
| 230-160 | 450 | 100 | 50 | 125 | 165 | 10 | 400 | 130 | 160 | 330 | 50 | |
| 240-160 | 450 | 125 | 50 | 125 | 165 | 10 | 400 | 130 | 160 | 350 | 50 | |
| 260-165 | 500 | 125 | 50 | 130 | 165 | 10 | 450 | 130 | 160 | 362 | 50 | |
| 280-165 | 500 | 125 | 50 | 130 | 165 | 10 | 450 | 130 | 160 | 390 | 50 | |
| 300-165 | 500 | 125 | 50 | 150 | 165 | 10 | 450 | 130 | 160 | 400 | 50 | |
| 350-165 | 500 | 125 | 50 | 150 | 165 | 10 | 450 | 130 | 160 | 460 | 50 | |
| 300-180 | 550 | 125 | 50 | 150 | 182 | 10 | 500 | 140 | 170 | 400 | 50 | |
| 300-215 | 700 | 150 | 70 | 180 | 215 | 10 | 650 | 170 | 200 | 430 | 50 | |
| 330-215 | 700 | 150 | 70 | 180 | 215 | 10 | 650 | 170 | 200 | 470 | 60 | |
| 350-215 | 700 | 150 | 70 | 180 | 215 | 10 | 650 | 170 | 200 | 500 | 60 | |
| 370-215 | 750 | 150 | 70 | 180 | 215 | 10 | 700 | 170 | 200 | 525 | 60 | |
| 450-215 | 850 | 150 | 70 | 180 | 215 | 10 | 800 | 170 | 200 | 600 | 60 | |

| Sizes of the elevator head and foot for plastic elevator buckets (parameters in mm) | | | | | | | | | | | | |
|---|-----|-----|----|-----|-----|----|-----|-----|-----|-----|----|--|
| Plastic | 1 | 2 | 3 | 4 | 5 | 6 | 9 | 10 | 11 | 12 | 13 | |
| S100-90 | 250 | 100 | 40 | 100 | 90 | 8 | 200 | 85 | 110 | 190 | 50 | |
| S130-120 | 250 | 100 | 40 | 100 | 121 | 8 | 200 | 100 | 125 | 220 | 50 | |
| S140-120 | 300 | 100 | 40 | 100 | 120 | 8 | 250 | 100 | 125 | 230 | 50 | |
| S150-110 | 350 | 100 | 45 | 100 | 113 | 8 | 300 | 115 | 140 | 240 | 50 | |
| S180-140 | 400 | 100 | 45 | 100 | 146 | 8 | 350 | 115 | 140 | 270 | 50 | |
| SPS200-150 | 400 | 100 | 50 | 125 | 150 | 8 | 350 | 125 | 150 | 300 | 50 | |
| S225-140 | 450 | 100 | 50 | 125 | 140 | 10 | 400 | 115 | 140 | 330 | 50 | |
| S230-170 | 450 | 100 | 50 | 125 | 173 | 10 | 400 | 130 | 160 | 340 | 50 | |
| S280-170 | 500 | 100 | 50 | 130 | 173 | 10 | 450 | 130 | 160 | 390 | 50 | |
| S300-180 | 550 | 125 | 50 | 150 | 181 | 10 | 500 | 140 | 170 | 400 | 50 | |
| S350-180 | 600 | 125 | 50 | 150 | 181 | 10 | 550 | 140 | 170 | 470 | 50 | |
| S330-215 | 700 | 150 | 70 | 180 | 222 | 10 | 650 | 170 | 200 | 470 | 60 | |
| S370-215 | 750 | 150 | 70 | 180 | 218 | 10 | 700 | 170 | 200 | 525 | 60 | |

Basic size Starco

Basic parameters of an elevator with Starco resp. Super Starco elevator buckets. The elevator head and foot sizes may be calculated using the mentioned equations and tables. For lifting heights between 31 and 70 m, parameter 3 must be increased by 1/3.



Pulleys for Starco

The following table shows the pulley diameters for the Starco bucket type. The table also lists the corresponding minimum and maximum belt speeds for Starco buckets.

| Pulleys for Starco elevator buckets (parameters in mm) | | | |
|--|-----------------|---------------------|---------------------|
| Type Starco | Pulley diameter | Minimum speed (m/s) | Maximum speed (m/s) |
| S100 - S120 | 250 | 1,45 | 3,05 |
| | 300 | 1,58 | 3,32 |
| S130 - S140 | 300 | 1,42 | 3,00 |
| | 400 | 1,61 | 3,39 |
| S160 - S200 | 400 | 1,50 | 3,15 |
| | 500 | 1,62 | 3,41 |
| | 630 | 1,76 | 3,70 |
| | 750 | 1,86 | 3,91 |
| | 800 | 1,89 | 3,98 |
| | 900 | 1,96 | 4,11 |
| | 1.000 | 2,00 | 4,21 |
| S230 - S300 | 500 | 1,53 | 3,22 |
| | 630 | 1,67 | 3,52 |
| | 750 | 1,77 | 3,73 |
| | 800 | 1,80 | 3,80 |
| | 900 | 1,88 | 3,94 |
| | 1.000 | 1,92 | 4,04 |
| | 1.250 | 2,03 | 4,27 |
| S330 - S370 | 630 | 1,53 | 3,22 |
| | 750 | 1,64 | 3,44 |
| | 800 | 1,67 | 3,52 |
| | 900 | 1,75 | 3,68 |
| | 1.000 | 1,80 | 3,80 |
| | 1.250 | 1,93 | 4,05 |
| | 1.500 | 2,00 | 4,24 |
| S330 - S630 | 800 | 1,56 | 3,28 |
| | 900 | 1,63 | 3,43 |
| | 1.000 | 1,70 | 3,57 |
| | 1.250 | 1,82 | 3,84 |
| | 1.500 | 1,92 | 4,04 |
| | 1.800 | 2,00 | 4,23 |
| | 2.000 | 2,06 | 4,33 |
| S330 - S630 | 2.500 | 2,15 | 4,52 |

